

ELECTRICAL CHASE

MURUS SIP

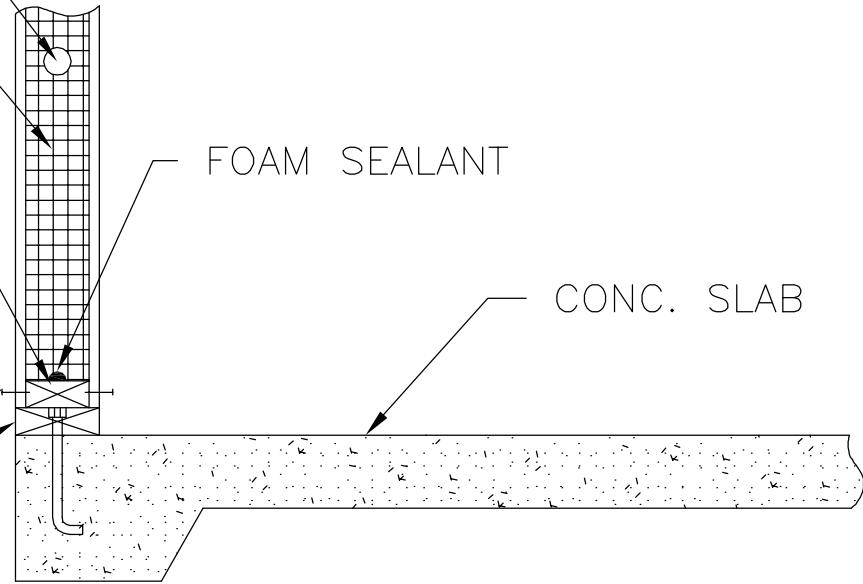
2X INLET NAILER GLUED &  
SCREWED TO P.T. PLATE W/  
3" GALV. SCREWS @ 6" O.C.

8D NAILS @ 3"-4" O.C.  
(BOTH SIDES)

2X P.T. BOTTOM PLATE  
W/ 1/2"Ø A.B. @ 48"  
O.C. & DOUBLED @ CORNERS  
W/SILL SEAL & INSECT SHIELD

FOAM SEALANT

CONC. SLAB



27

PANEL TO CONCRETE SLAB  
CONNECTION

THE MURUS COMPANY